

SERVICE MANUAL

Eleganza Smart



Version: 02

Date of printing : 6/2006

File: servismanual_Eleganza_Smart.doc

Service manual



Eleganza Smart
Service manual

LINET spol. s r.o.
Želevčice 5
274 01 Slaný, Česká Republika

Service Department:
E-mail: servis@linet.cz
Tel.: +420 312 576 258
Fax: +420 312 522 668

Author: LINET, s.r.o
Version: 01
Date of printing: 03/2006
File name: servismanual_Eleganza_smart.doc

Copyright © LINET, s.r.o., 2005
Translation © LINET, 2005
All rights reserved.

All trademarks and brands are the property of the appropriate owners. The manufacturer reserves the right to changes in the contents of this manual that relate to the product's technical regulations. It is for this reason that the contents of this manual may indicate differences from the current manufacture of the product.

Contents

1	Fault diagnosis	5
1.1	Diagnosis using the ACP panel	5
2	Power box PB 30.XX PB 29.XX	9
2.1	Motor fault diagnosis	10
2.2	Schematic diagram of the power box connections – Eleganza Smart	11

Picture Index:

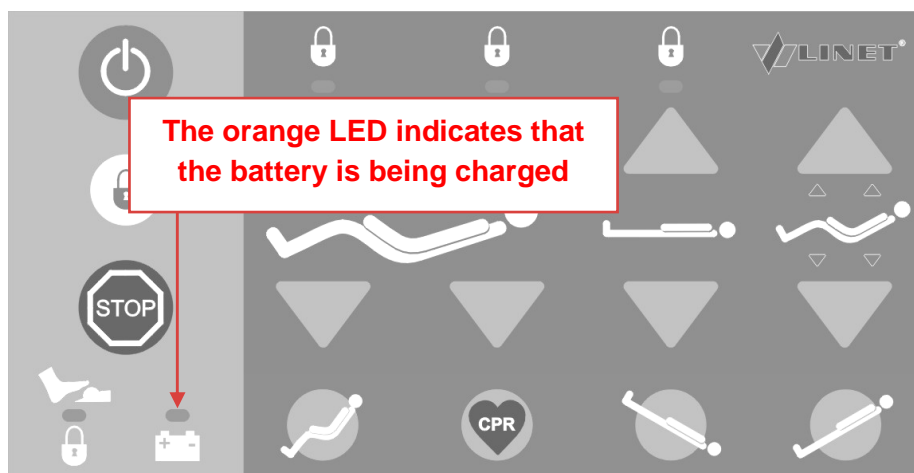
Picture nr. 1: <i>Battery charging indication – PB30.XX</i>	5
Picture nr. 2 : <i>ACP panel used with power box PB 29.XX</i>	5
Picture nr. 3: <i>Power box PB 30.XX</i>	6
Picture nr. 4: <i>Power box PB 29.XX</i>	6
Picture nr. 5: <i>Function lock LEDs</i>	7
Picture nr. 6: <i>Active GO button</i>	7
Picture nr. 7: <i>Connection of motors and controls to power box PB 30</i>	9
Picture nr. 8: <i>Connection of motors and controls to power box PB 29</i>	9
Picture nr. 9: <i>CPR setting</i>	10

1 Fault diagnosis

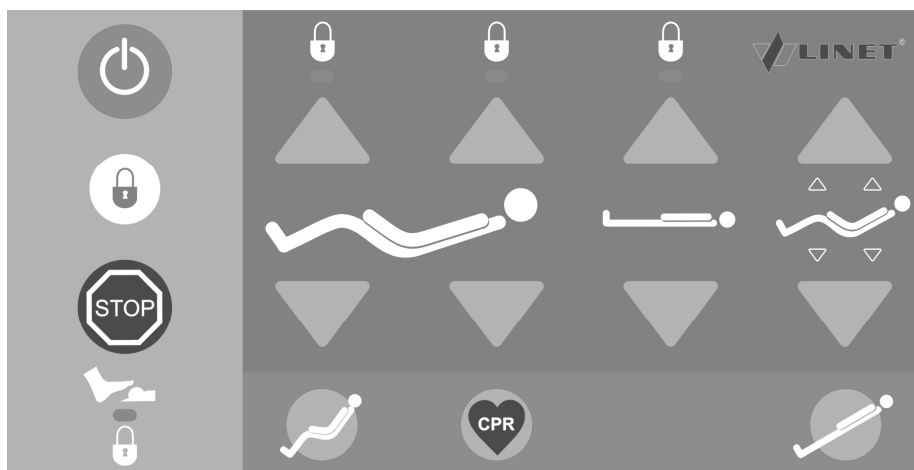
1.1 Diagnosis using the ACP panel

The battery LED on the ACP panel illuminates as the bed is being connected to the power supply to indicate that mains power is present. The battery LED flashes during charging of the battery. If the battery LED does not illuminate, the battery is fully-charged. This only applies to power box PB 30.XX.

Picture nr. 1: Battery charging indication – PB30.XX



Picture nr. 2: ACP panel used with power box PB 29.XX



The ACP panel used with power box PB 29.XX does not include the battery-charging LED or Trendelenburg function.

POWER BOX PB 30.XX

If the orange LED is illuminated constantly, it means that the battery is either not connected to the power box or it is faulty. In the first case, connect the battery to the power box. In the second case, it is necessary to replace the battery.

Picture nr. 3: *Power box PB 30.XX*



POWER BOX PB 29.XX

On power box PB 29.XX, the battery socket is blank.

Picture nr. 4: *Power box PB 29.XX*

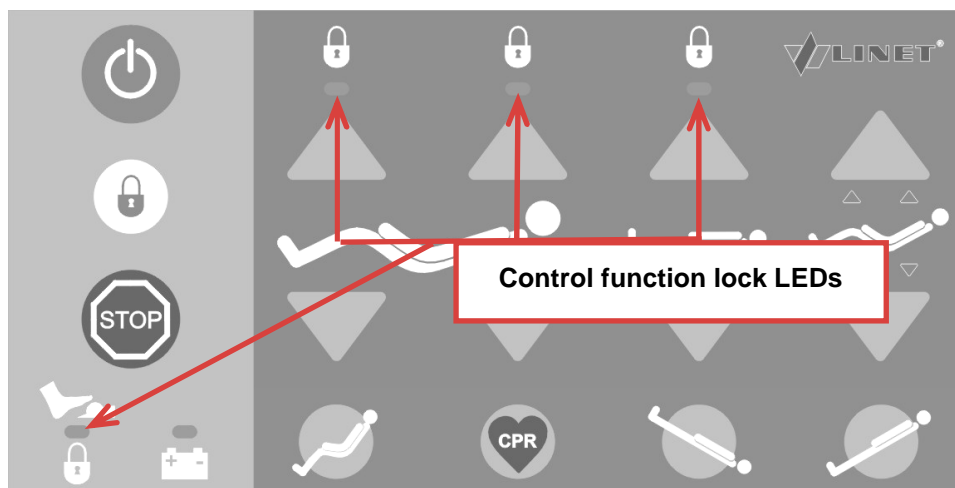


Only when a working ACP panel is connected to the power box are we able to use all electric functions and controls. If the ACP panel is not connected to the power box, the power box beeps intermittently.

What should be done if the bed does not function at all?

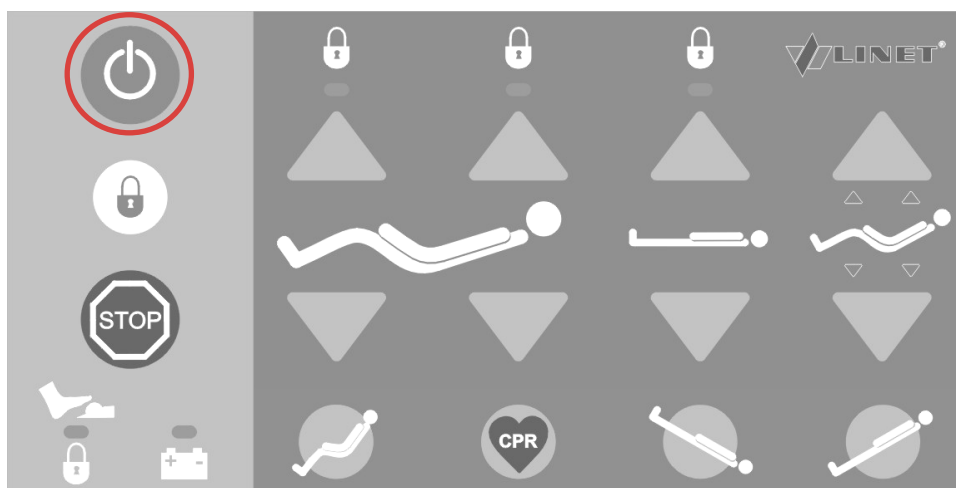
It is possible, using the function locks, to lock individual functions temporarily. If the function lock LEDs are illuminated, it is not possible to position the locked part of the bed.

Picture nr. 5: *Function lock LEDs*



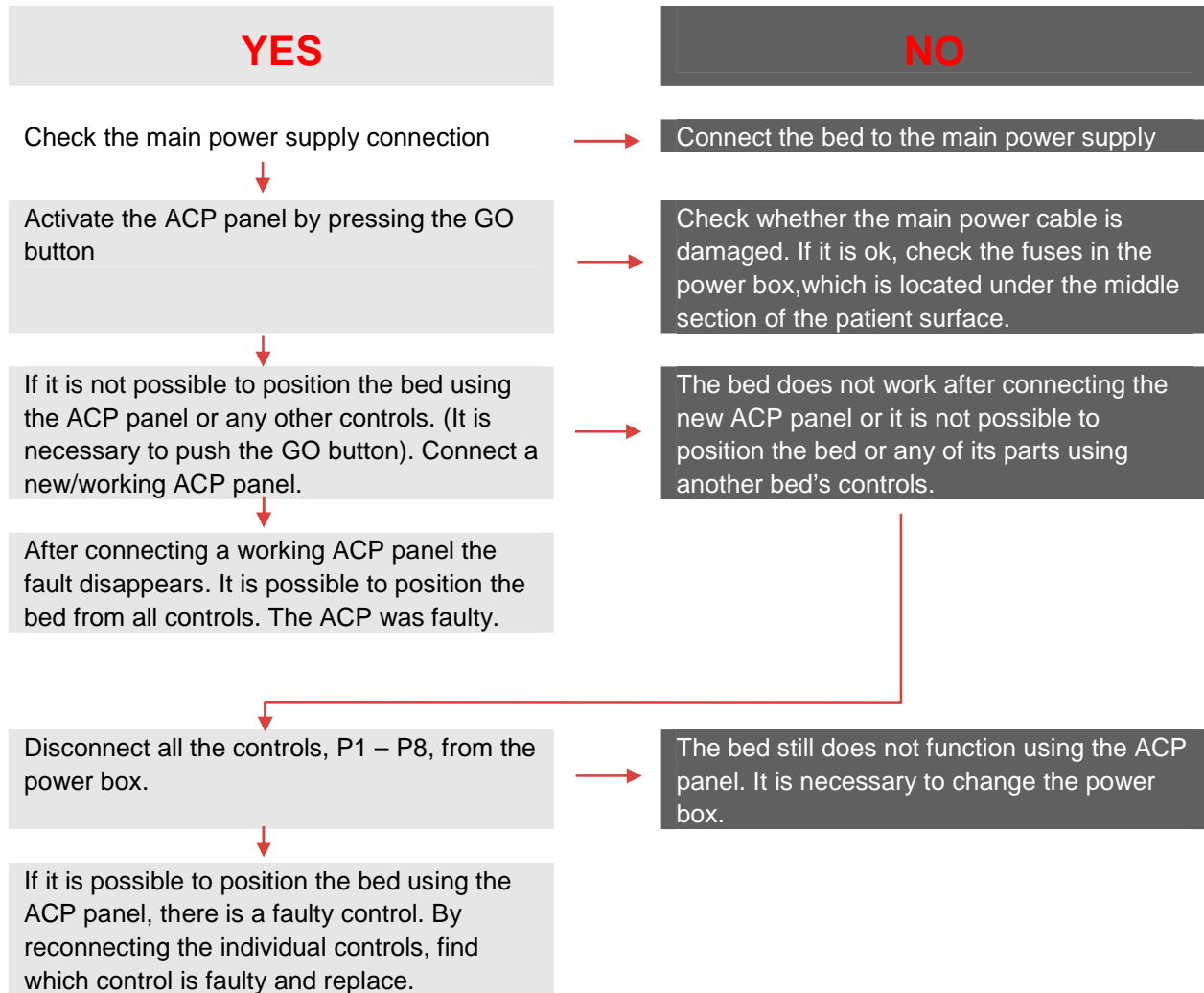
It is always necessary, before using any of the bed's functions, to activate the keyboard by pushing the GO button.

Picture nr. 6: *Active GO button*



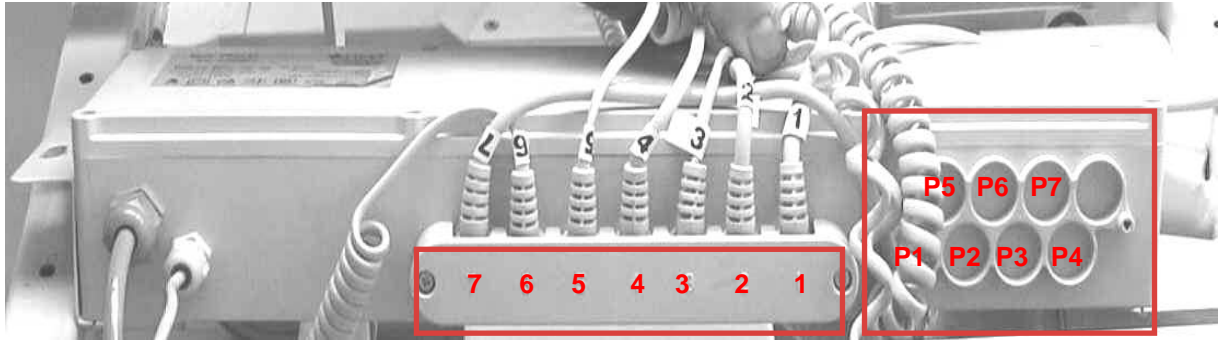
Power box and hand control fault diagnosis table

If it is not possible to position the bed, perform the following test:



2 Power box PB 30.XX PB 29.XX

Picture nr. 7: Connection of motors and controls to power box PB 30.



Picture nr. 8: Connection of motors and controls to power box PB 29



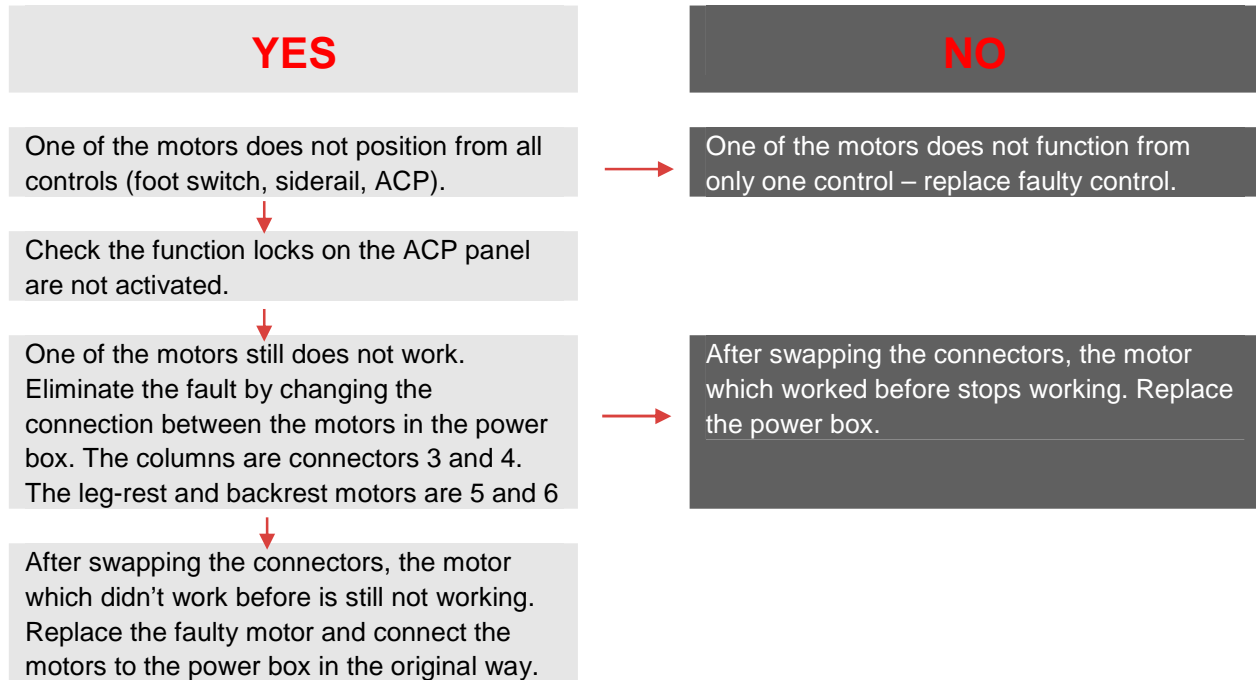
- 7 Battery (only power box PB 30.XX)
- 6 Leg-rest motor
- 5 Backrest motor
- 4 Head-end column
- 3 Foot-end column
- 2 Hand control
- 1 Supervisor panel ACP

PB 30.02, PB29.02 power box control outlets

(Optional controls and undercarriage light)

- P1 Siderail control
- P2 Siderail control
- P3 Foot switch
- P4 Foot switch

2.1 Motor fault diagnosis

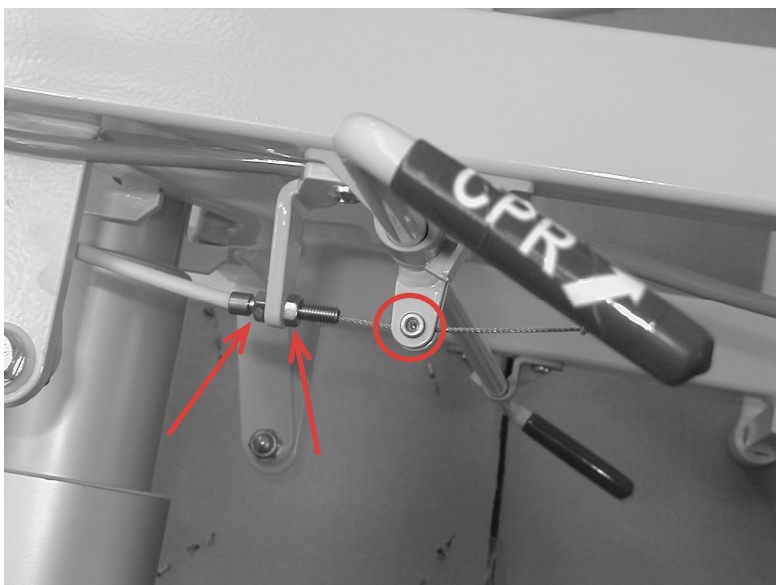


Attention!

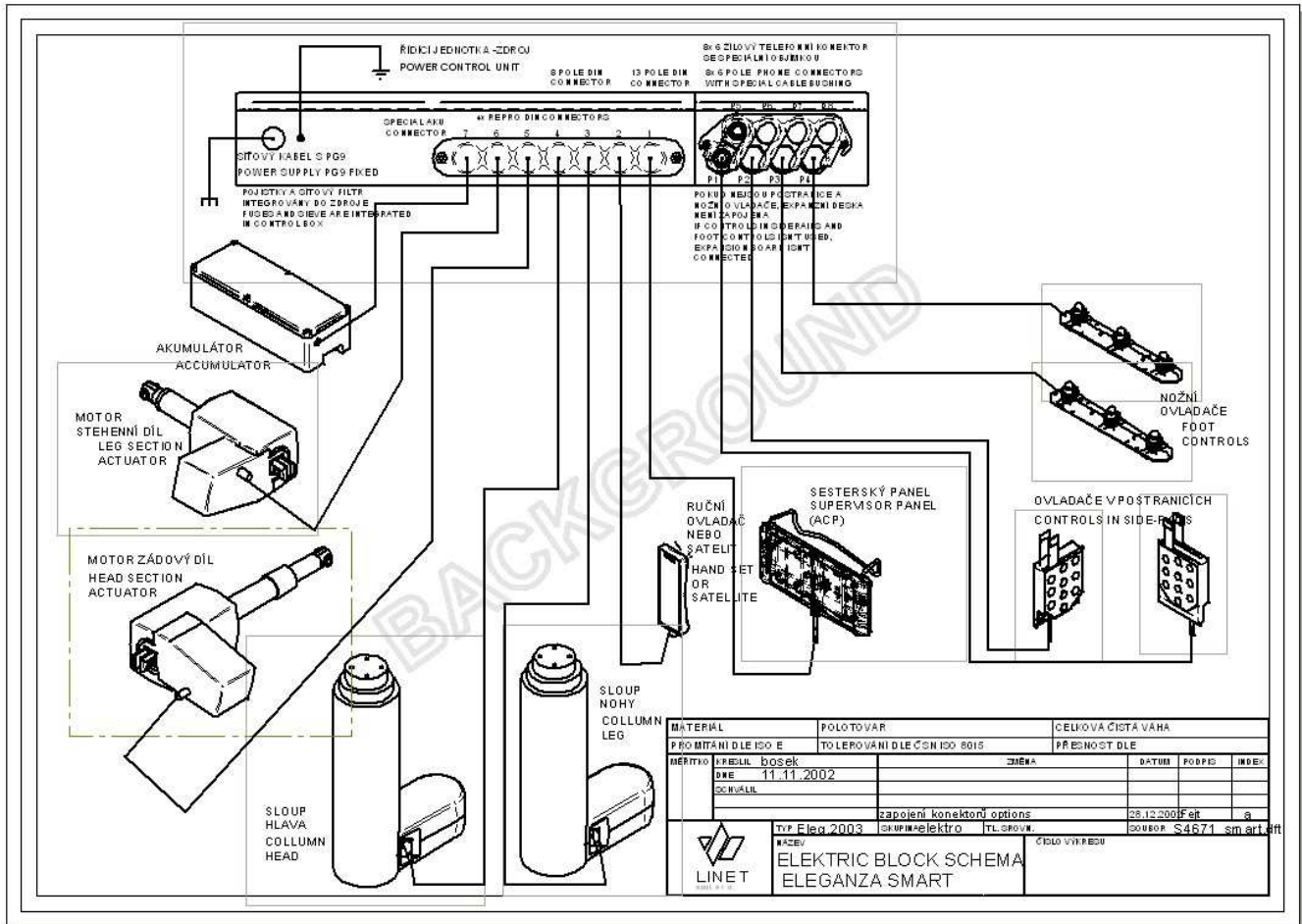
If the backrest motor is working but the backrest is not rising, the CPR wire may be too tight. It is necessary to loosen it using the setting nut.

All service operations (motors, controls, spare parts replacement), can be found on the service video CD, which is part of this manual.

Picture nr. 9: CPR setting



2.2 Schematic diagram of the power box connections – Eleganza Smart



Every bed must be inspected annually by a Linet authorised technician.